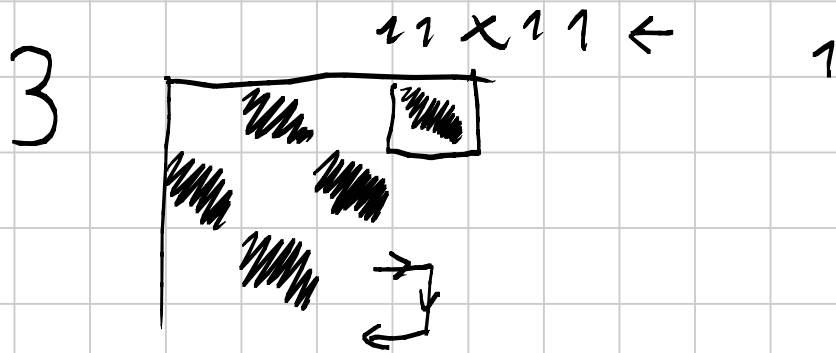


Senior 2006 - Combinatoria 2 - esercizi (3, 7, 8, 10)

Titolo nota

15/09/2006



7 1, 1, 2, 2, ..., 2002, 2002

$\forall K$ tra i due K vi sono K numeri

B N B N

B N B

1 1 1

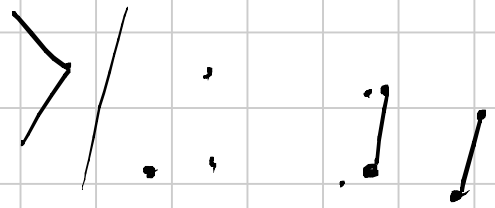
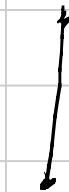
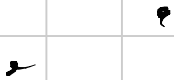
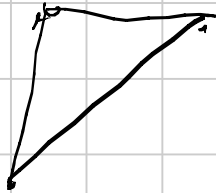
- - - -

-

dispari
pari

stesso colore
diverso colore

8

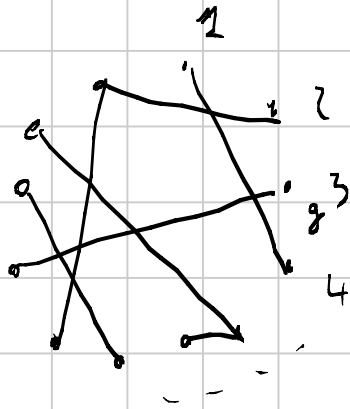


$$\frac{1}{2}$$

vertici di grado
dispari

$E = \#$ lati all'inizio

-



$F(g) = \# \text{ amici con la cosa dello stesso colore}$
 $- \# \text{ amici con la cosa di un altro colore}$

$$F = \sum_{i=1}^{12} F(g_i)$$